

Sprouston Primary School

Sprouston Road
Sprouston
Kelso
Scottish Borders, TD5 8HP



Sprouston ☎: 01573 224873

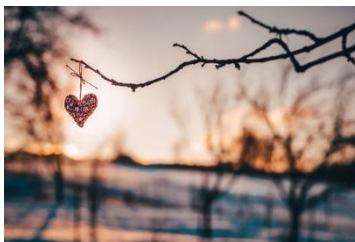
Ednam Primary ☎: 01573 224172

✉ tamsin.ashby@scotborders.gov.uk

website <http://sprouston.scotborders.sch.uk>

Mrs Barbara Shiel – Acting Headteacher, Sprouston & Ednam

February Newsletter



Upcoming Events

📅 Friday 6th March – Kypie Farm Visit, Mindrum

Information and permission slips will be sent out nearer the time.

🚗 February Holidays

Monday 16th – Friday 20th February

School will be closed for the mid-term break.

📄 In-Service Day

Monday 23rd February

No school for pupils.

🚲 Monday 16th & Tuesday 17th March – P5/6 Bikeability

Information and a consent form has been sent via Parents Portal to P5/6 parents.

Showbie (Parent/Carer Group)

Miss Jamieson has created a new Showbie group for parents and carers.

This will include updates, photos and weekly learning information.

➡ Join here: <https://communities.showbie.com/EHYP27>

➡ Code: EHYP27

If you have any access issues, please let us know.

Library Bus

Next visit: Monday 9 March. Please ensure all outstanding books are returned.

Lunches

Please continue to book lunches **at least two weeks in advance.**

Essentials for School

Please send children with a water bottle and raincoat. **Water only in bottles**, in line with Healthy Schools guidance.

Provide a healthy mid-morning snack. Please keep chocolate bars/sweets/haribos for home treats—thank you!

Pack a spare change of clothes in bags for wet or muddy days.

Before School & Parking

Playground supervision is available from **8.25am – 8.40am.**

Children should not arrive before this time.

There is **no parent parking** in the school grounds.

Parents should park along **Dean Road** and walk children to school.

Please do not park on the grass.

Nametags

When ordering nametags from **www.mynametags.com**, please quote the school's ID number:

👉 **30388**

Garden Centre Vouchers (Klondyke, incl. Kelso)

If you shop at any **Klondyke Garden Centre** (including Kelso), please ask for '**Gardens for Schools**' vouchers.

- 1 voucher for every **£10 spent**
- Every **250 vouchers = £100 Garden Centre voucher**
- **You must ask for the vouchers at checkout**

Current total: 70 vouchers

Stay Up to Date

Please check the **school website** and **Facebook page** regularly for updates, news and messages.

Don't forget to use **Easy Fundraising** for online purchases.

Dates for Your Diary

- **1st June** – Parents' Evening
- **8th June (PM)** – Sports Day
- **15th June (PM)** – Backup Sports Day

Term Dates (Winter/Spring & Summer 2026)

- **Mon 5 Jan** – Term starts, all resume
- **Fri 13 Feb** – Last day of term for pupils
- **Mon 16 – Fri 20 Feb** – Mid-term holiday
- **Mon 23 Feb** – In-service day
- **Thu 2 Apr** – Last day of term for pupils and staff
- **Fri 3 – Fri 17 Apr** – Easter holidays
- **Mon 20 Apr** – Summer term starts, all resume
- **Mon 4 May** – May Day holiday (schools closed)
- **Tue 5 May** – Staff resume (in-service day)
- **Wed 6 May** – Pupils resume
- **Thu 2 Jul** – Last day of term for pupils and staff