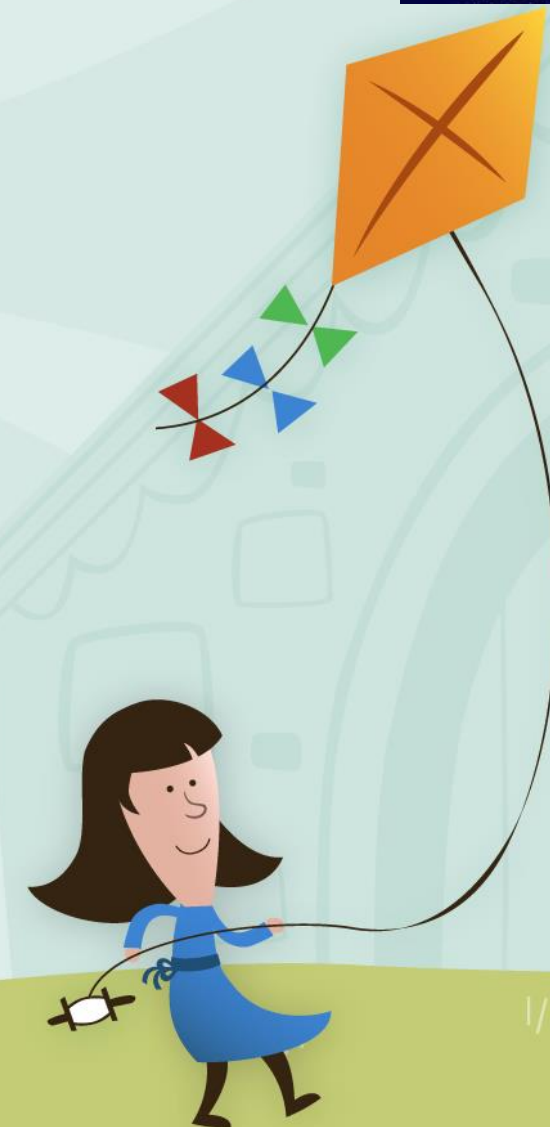




Returning to Bankhead Primary School and Nursery Class Session 2020/21

Information to Support Parents and Carers



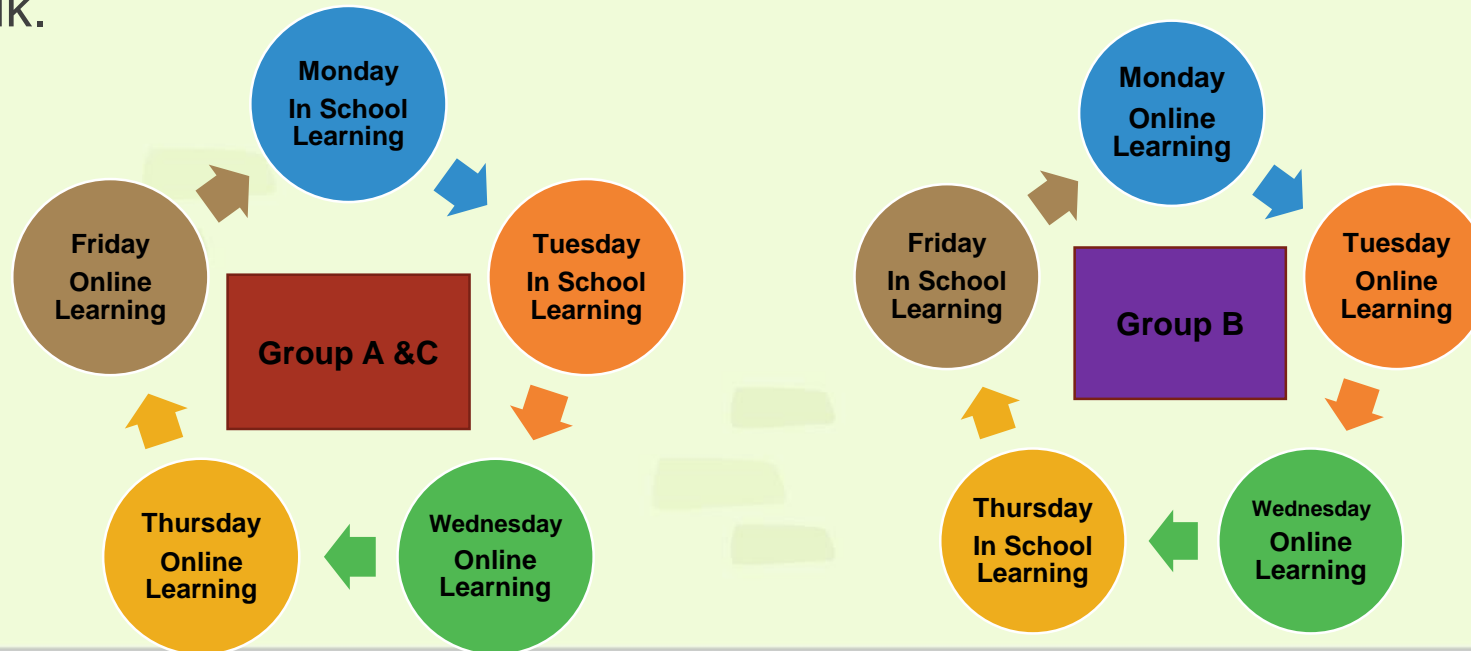
Attendance





What will school attendance look like?

Your child will engage in a “blended model” of learning. This means that your child will attend the school and nursery building for face-to-face learning opportunities for some of the week and will carry out online learning experiences for the remainder of the week. We will send you a letter regarding your child’s pattern of attendance. If you do not receive this, please get in touch by telephone on 0141 647 6967 or email enquiries@bankhead-pri.s-lanark.sch.uk.





What will nursery and school attendance look like?

We have had to make some adjustments to the nursery and school day to ensure the health and safety of all children, staff and parents. Please pay attention to the information.

- Nursery session will start at 8.50 am and finish at 2.50pm.
- Rooms 1-5, Gym hall and Room 10 and 11 – will start at 9.00am and finish at 3.00pm.
- Rooms 6-9 will start at 9.10am and finish at 3.10pm.

This is a drop and go scenario to limit the number of people in the playground. Please drop your child off as close to their start time as possible.

Home time is also staggered to reduce contact between classes and parents.



What will school attendance look like?

We have had to make some adjustments to the school day to ensure the health and safety of all children, staff and parents. Please pay attention to the information within this table.

| Class | Start | Break-time | Lunch-time | Home-time |
|---------------------------|--------------|-------------------|-------------------|------------------|
| Room 1, 2 and gym hall | 9.00 | 10.30 - 10.45 | 12.00 - 12.45 | 3.00 |
| Room 3, 4, 5 | 9.00 | 10.30 - 10.45 | 12.00 - 12.45 | 3.00 |
| Room 6 & GP | 9.10 | 10.45 - 11.00 | 12.45 - 1.30 | 3.10 |
| Room 7, 8, 9 | 9.10 | 10.45 - 11.00 | 12.45 - 1.30 | 3.10 |
| Room 10&11 | 9.00 | 10.30 - 10.45 | 12.00 - 12.45 | 3.00 |
| | | | | |
| | | | | |



What does the school and nursery look like?



What will nursery look like?



What will nursery look like?



What will nursery look like?



What will nursery look like?



What will nursery look like?



Regular hand washing will be a main focus throughout the day. All toilets and sinks have soap dispensers and there are snuffle stations throughout the nursery. Children must sanitise their hands on entry to and exit from the building.



What will school look like?



Some examples of class layouts

Classes will look a little different for a while!



What will school look like?



Classes will look a little different for a while!
They may even be classes in other areas of the school now,
like the Gym Hall and our Nurture Base.



What will school look like?

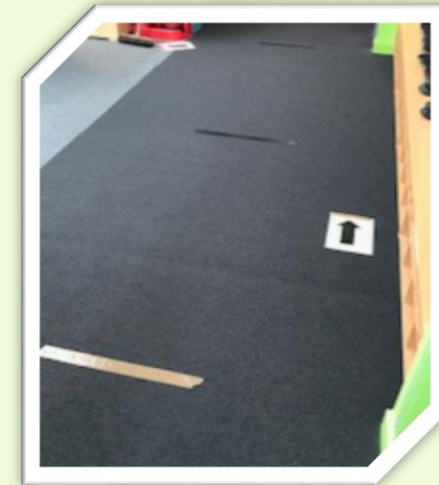
Lunchtimes will be staggered and our Bankhead boy and girl will show children where they can sit.



Photographs from around the school. Our boy and girl will mark out 2 metre distances to help child maintain a safe physical distance.



What will school look like?



Each class will have its own section of the playground.

There will be a one way system in place to limit contact in corridors.



What will school look like?



Regular hand washing will be a main focus throughout the day. All classes have soap dispensers and there are sanitising stations throughout the school. Pupils must sanitise their hands on entry to and exit from the building.



Dropping off and Picking up



Nursery Children



For drop off and pick up please follow social distancing procedures. There will be clear signage with 2metre spacing, you will be asked to stand forming a line around the outskirts of our nursery building. A staff member will welcome your child into our foyer area and there will be a further 2 staff members helping children with their shoes and bag. This is the same process as happened just prior to closure. For dismissal – a staff member will be out at our front door and will call for your child once you arrive.



School Children



We ask that one parent/carer per child drops off and picks up their child. You will **not** be allowed access for vehicles into the school grounds unless you are a blue badge holder or have a prior arrangement with our Head Teacher – Mr Hamill.

If you have a child to collect from the nursery and school who is dismissed at a different time, we ask you please wait outside the school gates and observe social distancing. Children from the school will be walked to and dismissed by their teachers at the school gates.

Rooms 1-5 can be collected from the gate next to Nursery playground. Staff will escort children to the gate.

Primary 1C can be collected from the Gym Hall. Primary 1 will be dismissed before all other classes.

All other classes dismissed as normal but will exit from doors at the top of the playground and leave via gates at Gym Hall.



Entering and Leaving



Entering and Leaving the Building - Nursery



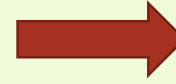
Nursery Class – Entering and Leaving

Entering the building

Enter via the nursery door



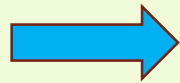
Go through the nursery door where the early years staff will be present.
Sanitise your hands.



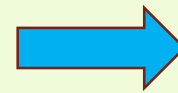
Children directed to their learning pod

Exiting the building

Sanitise your hands.



The teacher will dismiss children through the nursery door.



Parents will line up at the side of the nursery building to collect their child



Entering and Leaving the Building School



Primary Classes – Entering and Leaving

Entering the building



Exiting the building

Rooms 1-5 will enter and exit via the classroom door. Entering at **9.00am** and exiting at **3.00pm**.

Rooms 8 & 9 will enter and exit via the doors in the back playground. Entering at **9.10am** and exiting at **3.10pm**

Rooms 6, 7 & GP will enter and exit via the doors next to the nursery playground/garden. Entering at **9.10am** and exiting at **3.10pm**

Rooms 10 & 11 will enter and exit via the doors in the back playground. Entering at **9.00am** and exiting at **3.00pm**

When entering and exiting, remember to sanitise your hands.



Uniform





Should my child wear uniform?

Yes! 😊

We are very proud of our nursery and school and its smart uniform. Now more than ever, it is important that we maintain our sense of nursery and school identity and are in the right mindset for learning! We are also committed to ensuring that no child feels they have to keep up with latest fashions and trends, wearing uniform ensures we are all equal. We look forward to seeing all children wearing our nursery and school uniform when they are in our building.





Should my child wear uniform?

How do I get uniform?

We have a selection of pre-loved uniform in nursery and school and can provide these to parents free of charge.

Uniform can be bought at -

https://myclothing.com/?gclid=EAlaIQobChMI1fTok7WO6gIVNoBQBh1WBQMhEAYASABEgl3XvD_BwE





Does my child need indoor shoes?

Yes! 😊

Please continue to send your child with indoor shoes. These will remain in nursery and school in your child's individual shoe box.



Eating in School and Nursery





Can my child bring a morning snack?

Yes!

We would encourage you to continue to provide a small snack for morning break. This can be brought to school and left in your child's bag. Nursery children will be provided with snacks. This will no longer be set up as a 'free-flow' snack and will now be a 'sit down' snack with their Key Worker.



Can my school child bring a packed lunch box?

Yes!

Please make sure your child's lunch box is properly labelled.



Playtime in School



What happens at play time for school children?

Our play ground and MUGA has been split to maximise the safety of your child. Our play times are split into classes and will be staggered. Between 10.30-10.45 Rooms 1-5 will be in their own designated playground and Rooms 9 and 10 will play in the MUGA. Between 10.45-11am Rooms 6, 7 & GP will be in the playground and Rooms 8 and 9 will play in the MUGA.



School and Nursery Equipment





Can my child bring a bag?

Yes!

Please ensure your child does not bring toys or unnecessary objects from home.



Can my school child bring a pencil case?

We will provide individual resources for children. It is perhaps wise to keep your pencil cases at home for the days where your child will work from home. If you require assistance with home learning materials, please let us know!



Visiting our Nursery and School





Parental Visits

We pride ourselves on being a strong nursery and school community, however in light of our current circumstances, parents and carers are encouraged not to enter the school and nursery building. They are also encouraged to phone to make appointments to speak with school and nursery staff. We have made this decision to ensure everyone's safety, however we are still the same staff team who want you to be as involved and supported as possible, so please do not hesitate to get in touch with us!

