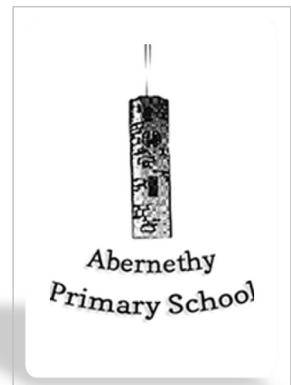
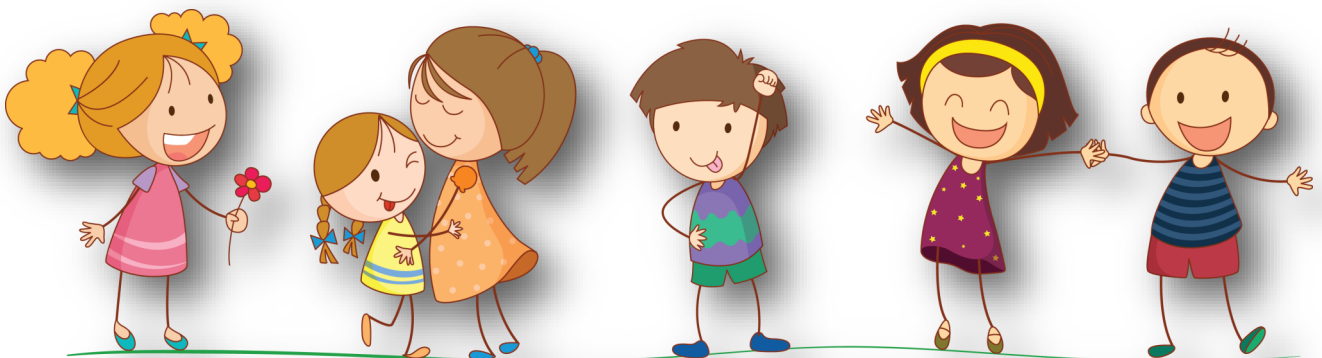




Welcome to Abernethy Nursery



Our handbook contains all the information you
need to begin your journey with us.....



Welcome to Abernethy Nursery

Nursery is the next stage in your child's development and we cannot wait to start this journey with you.

Abernethy Nursery is an integral part of Abernethy Primary School. The nursery is a stepping stone to successful learning and first contact with school. The nursery has a main activity space, area for toilets and a cloakroom. There is also a fenced off area for play outside. The nursery pupils also have the opportunity to take part in learning activities in other areas of the school.

Our ethos at Abernethy Nursery.....

Our **pedagogy** reflects several child development theorists and approaches. Through self-evaluation we have linked theorists to our approach and we continue to reflect on and develop our practice in the nursery. We strongly believe play is at the heart of learning and development. We provide open-ended resources and activities inside and outside that stimulate the child's curiosity and imagination. The well-being of the children is paramount and we value the children's ideas, thoughts and opinions. This ensures our nursery environment is child led, following their interests, needs and strengths of the children we care for. We nurture the whole child, supporting them to reach their full potential so they can grow up to be responsible, confident and happy individuals. Here at Abernethy Nursery, we aim to build strong relationships with families, sharing learning and experiences with each other so we can provide the best care and learning environment for the children.



At Abernethy Nursery we.....

- Provide a safe, nurturing and welcoming setting for families.
- Observe and assess the development of each individual child, building on previous knowledge and introducing new experiences.
- Create a rich play environment where children learn new skills, develop their interests and build relationships.
- Follow the Curriculum of Excellence to ensure children develop into: Successful learners, Confident Individuals, Responsible Citizens and Effective Contributors.



Our team.....

Ms S McKenzie - Head Teacher

Mrs Hodgkinson - Principle Teacher/Child Protection Officer

Miss Macdonald - Early Childhood Practitioner (ECP)

Mrs Shearer - Early Childhood Practitioner (ECP)

Miss Brown - Early Childhood Practitioner (ECP)

Ms Thomas - Play Assistant

Our nursery is led by ECPs on a day to day basis. Our Head Teacher support the ECPs and children throughout the week and our Early Years Support Teacher, visits the Nursery to support the learning experiences in nursery throughout the term.

Quality Assurance.....

The nursery adhere to a large number of policies to run the nursery safely and effectively. These are available for you on request.

We are also supported, monitored and regulated by the following to ensure we provide a high quality of care and learning provision:

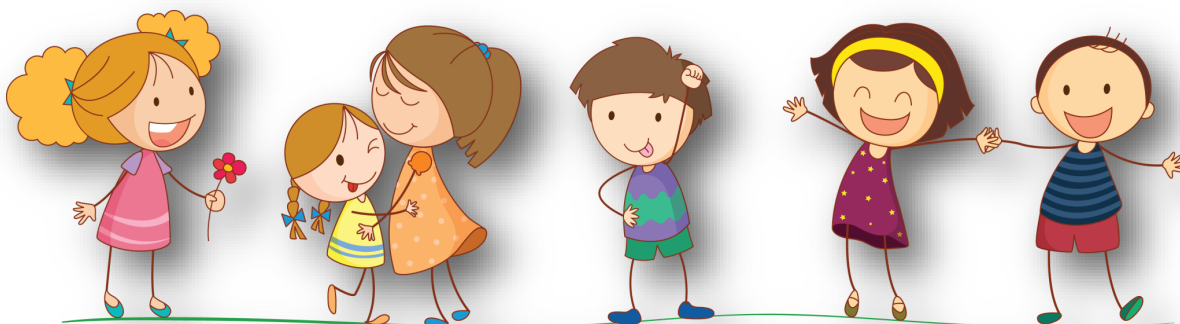
- School Management Team.
- Education & Children's Services (Perth and Kinross Council).
- The Care Inspectorate - Regulates and inspects services to ensure high quality, safe care is provided and meets service users needs.
- HMI (Her Majesty's Inspectorate) of Education - Responsible for the inspection of schools/nurseries.

Starting Nursery.....

It may take your child a few days to settle, therefore, if you can, you are welcome to stay with your child.

If, perhaps due to work commitments you are unable to stay please do be assured that staff will support and nurture your child to ensure they are safe, settled and happy.

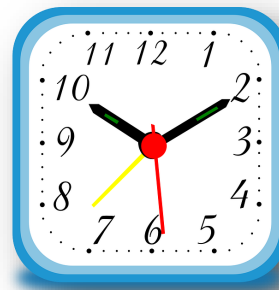
Staff will spend time with them to support this transition from home to nursery. We may use favourite toys or advise using a transition item from home such as a favourite teddy.



Nursery hours.....

9.00am - 3.00pm (full day)

9.00am - 12 noon (half day without lunch)



Delivery and Collection

- It is important staff are aware of any adults likely to collect your child and NO child will be allowed to leave with anyone under 16 years old.
- The nursery is a secure entrance with a buzzer system.
- Staff will open the door at the start and end of each session.
- Visitors for the rest of school must use the main entrance.
- Children can arrive within the first 10 mins of a session to reduce congestion in our cloakroom. Staff will open the door 5 mins before the end of a session to reduce the congestion at this time too.

Dressing for nursery

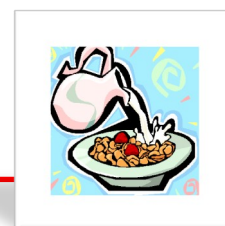
We promote independence with self-help skills so please bear this in mind when your child is attending nursery.

Ideally they should wear:

- Comfy clothes which are easily fastened and easily washed
- Slip on or Velcro fastening indoor shoes
- Outdoor shoes which are as easy for them to put on and take off by themselves.
- In cold weather please provide warm coats, gloves and hats
- In warm weather they will need a hat and sun-cream (clearly labelled with your child's name).
- Wellies and waterproofs for wet outdoor play.

Change of clothes.....

Your child will be given a red drawstring bag, kept at their peg in the cloakroom, and we ask that a change of clothes be kept in this to change into in case of toileting accidents, messy play or after outdoor muddy play. Please ensure these items are labelled clearly.



Snack.....

Children are entitled, at no cost, to 1 snack and a lunch every day.

We promote healthy eating through the provision of fresh fruit/vegetables, wholemeal bread, cheese, oatcakes, cereal to name a few.

Children are encouraged to be independent and to help themselves to snacks with the support of an adult who leads snack time. We see this as a super opportunity to develop a huge range of skills such as social communication, responsibility - helping to prep it and helping each other. Please advise the nursery if your child has a medically identified allergy or intolerance to a particular food or if your child cannot eat certain foods for cultural reasons.

Absences....

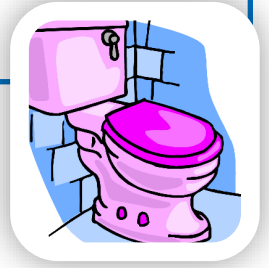
In order to ensure the wellbeing and safety of all children it is essential that parents/carers exercise responsibility, therefore, we politely ask that you -

- Keep the nursery/school up to date with telephone numbers and emergency contacts.
- Please inform nursery/school as quickly as possible if your child will be absent that day and of any pre-planned absences.
- Share any concerns you may have around your family with nursery staff to help ensure sensitive support for your child.

Toileting.....

Some children are still in the process of toilet training when they start nursery and we will support you and your child during this stage of development.

- Please ensure nappies, wipes and extra clothes are provided.
- Staff will support your child from nappies to using the toilet independently. We have various items to support this such as seat inserts, stools and potty's if required.



Illness....

- If your child is ill or feeling unwell it is much better for him/her to be at home rather than in the busy nursery. Very often children say they want to come even though they may have been sick during the night.
- Let us know if you're child is going to be absent due to illness
- Sickness/Diarrhoea - 48 hrs must have passed since the last episode before returning to nursery
- Please let your nursery know if your child has an infectious illness such as chicken-pox, measles, whooping cough, mumps, or rubella.
- We will contact you immediately if they are ill during nursery.



Medicines.....

- Parents should provide nursery with information if their child has a medical condition, whether this is for a temporary or long-term illness.
- Preventative inhalers (blue) must be handed to a member of staff and will be kept in an out of reach space for children but accessible quickly for adults. It is important that, if required, your child has a labelled inhaler for nursery use. It is the parents' responsibility to ensure these are renewed.
- Any child who requires other medication on a regular basis may require a health care plan. Please contact the staff to discuss this. If your child is required to take prescribed medicine during school time, a form must be filled in by a parent. Forms are available from the school office.

Accidents/Incidents.....

- If your child has an accident a First Aider will treat them.
- Accidents and incidents are recorded and will be shared with parents/carers.
- In certain circumstances we will contact you directly, eg head injury.



Sharing the Learning.....

We believe good home/nursery relationships are very important and you are welcome to discuss your child's progress or any concerns you may have at any time. We value any information you share about your child's individual needs and interests. Here are ways in which we share learning, progress and information with you.....

'All About Me' forms which are updated every 6 months and help us plan the right learning experiences and targets for your child.

A copy of our 'Learning Tree' which shows what learning experiences and outcomes are being covered from the *Curriculum for Excellence* within the term

Seesaw App - Our online Learning Journal where staff and children can record and share learning through photos/videos and comments. Please see the office for secure log in details.

Each child has a purple folder with copies of their 'All About Me' forms and hard copies of any other documents or artwork belonging to the child. These are kept in their trays at nursery.



The school app - Sends school info, events, messages to families which are delivered directly to parents/carers mobile phones. Please see the office for secure log in details.

A 6- week review after they have started nursery to inform you how they have settled in.

Nursery reports on your child's progress will be sent home at the end of the year.

A newsletter each term.

Would like to get involved in nursery life? We love to have our families in sharing the nursery experience together.....

Stay & Play sessions where you can spend some time playing with your child at nursery.



Parent helpers are always appreciated in nursery & can assist with trips, activities such as baking and sharing their skills.

Parent Council is open to nursery parents and is a chance to get involved planning school activities and discuss issues facing parents and children.

Wee Chit Chats are relaxed sessions where parents can speak to staff about nursery/early years matters such as Speech & Language, transition to school, Play@Home.

Holiday/IN-SET dates

Up- to- date school term and holiday dates are available online: <https://www.pkc.gov.uk/schoolholiday>

Child Protection

- The safety of children is everyone's responsibility. If staff have any concerns for a child or young person's wellbeing, they have a duty to pass on information that will help keep that child safe. All nursery staff receive child protection training at the beginning of a new academic year. The Child Protection Officer at the school is Morag Hodgkinson.
- If you are concerned about a child's welfare, you must report your concerns directly to the Child Protection and Duty Team at Perth & Kinross Council by phoning 01738 476768.



Transition

We aim to make the transition to primary school as smooth as possible. Nursery children have many opportunities to take part in activities with the P1 pupils and other classes throughout the year. These include sessions where the P1 teacher gets to know the pre-school children and an information evening for parents/carers. As we approach the summer, pre-school children work with 'buddies' from Primary 6.

Nursery Applications for Places or Making Changes to Sessions

To apply for a nursery place at the school or to make changes to a current place visit www.pkc.gov.uk and apply online.

Comments & Complaints

If you have any questions or need any further information please ask and we will be happy to help.

Email: abernethy@pkc.gov.uk

Website: <http://abernethyprimaryschool.schoolwebsite.scot/>

We also have a 'Question of the Week' table set up in the Nursery entrance, where you can give feedback on the quality of care provision. Questions will be based on the national *Health and Social Care Standards* set by the Scottish Government.

Complaints:

- If you have any problems or concerns please do not hesitate to discuss with the nursery staff or contact the school. It is helpful to discuss issues with staff so we can make changes to address them.
- If you are unhappy with the response you receive, you can contact the Education and Children's Services Department at Perth and Kinross Council. If you continue to be dissatisfied you can contact the Care Inspectorate which regulates early childcare provision.



Emergencies

- Children in the nursery will learn the evacuation procedure through regular fire drills.
- In the event of an emergency school closure e.g. due to adverse weather, emergency contacts will be informed.